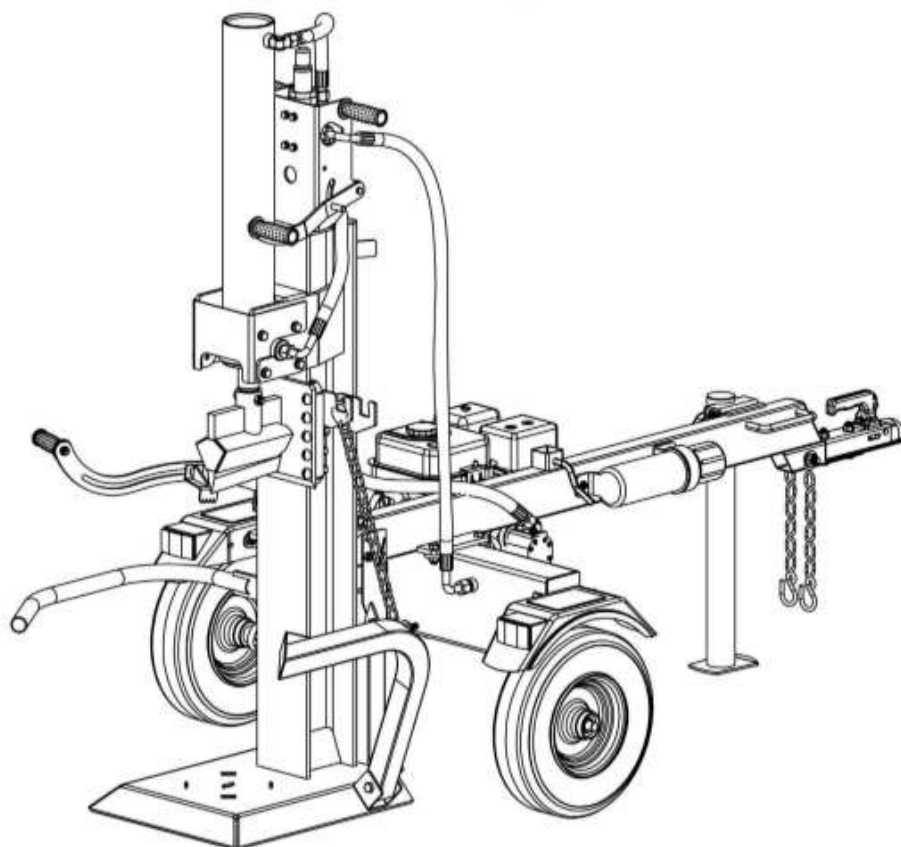


Woodcraft



User Manual Log Splitter Type - LS35BN



Read this manual carefully before using the log splitter.



Table of contents	Page
1. Saving the user manual	3
2. General description	4
3. Environment & disposal	4
4. Symbols	5/6
5. Safety instructions	7
6. Montage	8
6.1 Mounting wheels	8
6.2 Mounting drawbar & fenders	9
6.3 Mounting bar, document holder and handles	9
6.4 Connecting hydraulic hoses	10
6.5 Gasoline engine assembly	10
7. Electric break switch	10
8. Top up engine oil	11
9. Adding gasoline to the engine	11
10. Refill hydraulic oil	12
11. Ministry	13
11.1 Use of the wood splitter	13-14
12. Towing and transport	15
12.1 Storage	15
13. Maintenance	16
14. Problem & solution	17
15. Specifications	18
16. Assemblage	19
17. Parts	20
17.1 Parts List	21-27
18. Warranty	28
19. EC Declaration	29

1. Saving the user manual

Keep this user manual carefully. The information in this document may be required for installation, use, maintenance, or troubleshooting. Always keep the manual accessible for future reference. This user manual contains important safety instructions and legal information. Retain the document for the entire lifespan of the product. Always include the manual when the product is resold, transferred, or moved. It is mandatory to keep this user manual in a centrally accessible location. Employees working with this product must have access to the most recent version of this documentation at all times.



Dispose of electrical appliances in an environmentally friendly manner. Do not throw electrical appliances in with household waste. In accordance with European Directive 2012/19/EU on electronic equipment, they must be collected separately for recycling. Contact your local authorities for available disposal options for your worn-out appliance.

© 2026 Woodcraft. All rights reserved. No part of this publication may be reproduced, stored in an automated data file, or made public in any way without the express prior written permission of the publisher, except as provided by law.

2. General description

This Woodcraft log splitter is a powerful, hydraulically driven machine for splitting wood lengthwise (vertically). The machine features double control levers for safe operation and is equipped with a hydraulic cylinder, gear pump, and gasoline engine. It is suitable for processing logs up to a maximum length of 60 cm. The log splitter has a splitting force of 35 tons.

3. Environment & disposal

The log splitter contains materials and fluids that must be handled responsibly to prevent harm to people and the environment. Handle fuel, engine oil, and hydraulic oil with care. Prevent leaks and spills, and always collect used fluids in suitable, approved containment containers.

Used oil, fuel residues, filters, and contaminated cleaning materials must be disposed of as chemical waste in accordance with applicable local and national environmental legislation.

4. Symbols



- Read the manual
- Consult the technical documentation (parts list / manual) before use or maintenance.



- Hearing protection mandatory



- Safety gloves required



- Safety shoes mandatory



- Eye protection required



- Keep hands away from moving parts.



- Install or check shielding



- Caution: Danger from flying wood debris.



- Sharp element



- Pinching of hands



- Crushing by moving parts

5. Safety instructions

1. Ensure that you have fully read and understand this manual before using the log splitter; otherwise, there is a risk of physical injury or the log splitter becoming defective.
2. Use the original setup and safeguards.
3. Keep hands and feet away from the power-driven parts.
4. Do not wear loose clothing and/or jewelry, as these can get caught in the log splitter and cause physical injury.
5. Wear safety shoes, gloves, and good safety glasses when using it.
6. Use the log splitter only in a well-ventilated area.
7. Never leave the log splitter unattended when the engine is running.
8. Only authorized persons may operate the log splitter; when the log splitter is in operation, other persons must maintain a minimum distance of 3 meters.
9. While the log splitter is splitting wood, it is forbidden to adjust the valve.
10. When starting to split wood, place the wood to be split on one side and always work in this manner.
11. Never touch the splitting wedge when the machine is in use.
12. Keep children away from the log splitter.
13. Never stand on the log splitter.
14. Operate the control valve(s) only by hand.
15. It is forbidden to operate the log splitter when under the influence of alcohol, drugs, or medication.
16. Keep the workplace clean, dry, and free of oil or grease to prevent slipping or falling.
17. Keep an eye on the log splitter during use.
18. Split the wood lengthwise, i.e., perpendicular to the annual rings.
19. Use the speed of the log splitter according to the manufacturer's instructions.
20. The oil output must not exceed (42L/min). Use the specifications of the tractor used for this and adjust the engine speed accordingly. Exceeding the maximum permissible oil flow can lead to very dangerous situations due to the machine operating too fast.
21. The log splitter is not permitted on public roads.

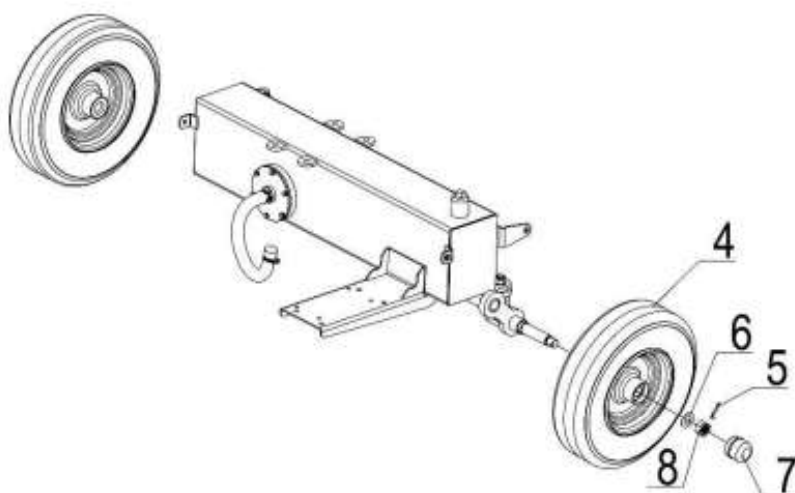
6. Montage

6.1 Mounting wheels

1. Place the frame on a stable, flat surface.
2. Ensure the kickstand is freely accessible.
3. Slide the wheel (#4) onto the axle of the wheel stand.
4. Place the flat ring $\varnothing 20$ (#6) over the axle against the wheel.
5. Screw the thin hexagonal slotted nut M20x1.5 (#8) onto the shaft.
6. Turn the wheel by hand.
7. Simultaneously tighten the crown/slotted nut until the wheel starts to turn noticeably heavier.
8. Then loosen the nut slightly so that the wheel can rotate smoothly and freely.

⚠ Please note:

- The bearing must not be too tight (brakes).
- There must be no play in the wheel.



Insert the split pin $\varnothing 4 \times 36$ (#5) through the opening in the shaft.

Bend the ends of the split pin so that it is securely fastened.

Place the black plastic bushing on the axle cap.

Position the axle cap (#7) on the end of the axle.

Use a rubber or wooden mallet to gently tap the plastic bushing until the axle cap is fully tightened.



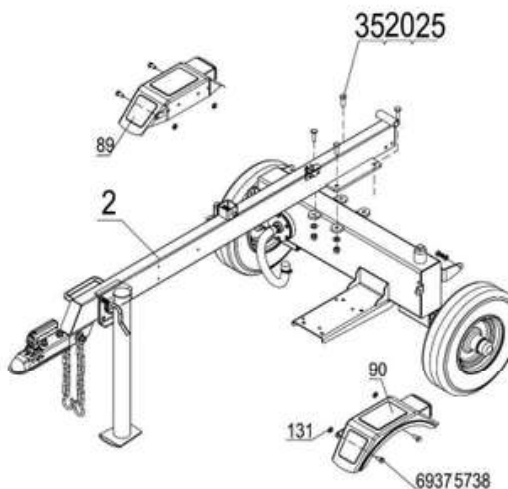
⚠ Do not use a metal hammer without protection to prevent damage.

Control

- Check if the wheel turns smoothly.
- Check if the cotter pin is properly secured.
- Check if the axle cap is securely tightened.
- **Repeat the above steps for the second wheel.**

6.2 Mounting drawbar & fenders

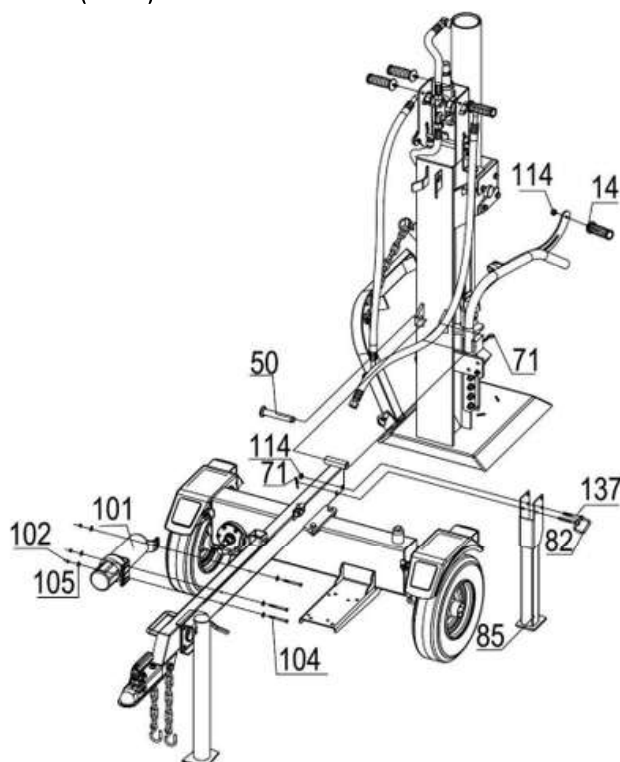
1. Attach the tie rod (#2) to the hydraulic reservoir with an M12x35 hexagon bolt (#35), a Ø12 flat washer (#20), and an M12 lock nut (#25).



2. Attach the fenders (#89 & #90) to the hydraulic reservoir using an M8x25 hex bolt (#69), an Ø8 flat washer (#37), an Ø8 spring washer (#57), and an M8 lock nut (#38). Place a rubber washer (#131) between the fender and the reservoir.

6.3 Mounting bar, document holder and handles

1. Attach the beam to the tie rod with a locking pin (Hitch Pin) (#50) and an R-pin (#71).
2. Attach the rear support leg (#85) to the tie rod with an M10x70 hex bolt (#137) and an M10 lock nut (#114). When the assembly is upright, secure the beam with a pull handle (#82) and an R-pin (#71).
3. Remove the M6x65 hexagon bolt (#104), the Ø6 large flat washer (#105), and the M6 nylon lock nut (#102) from the drawbar. Attach the manual can (#101) to the drawbar using parts #104, #105, and #102.
4. Attach the document holder (tube #101) to the pull rod.
5. Attach two plastic handles (#14) to the beam and two plastic handles (#14) to the splitter handle A and B with an M10 lock nut (#114).



6.4 Connecting hydraulic hoses

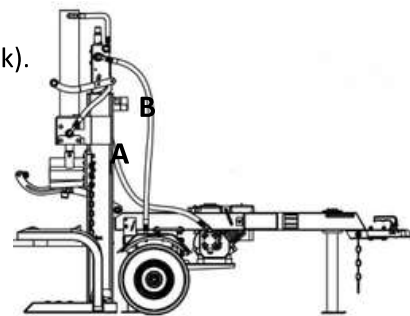
- Connect hose A to the hydraulic pump next to the engine (aluminum block).
- Connect hose B to the hydraulic reservoir tank/frame.

Remark:

- **First tighten the couplings hand-tight, then secure them firmly.**
- **Follow the natural curves**
- **No kinks in the hose**
- **No tension on the hose**
- **Ensure that the hoses can move freely when tilting the beam.**

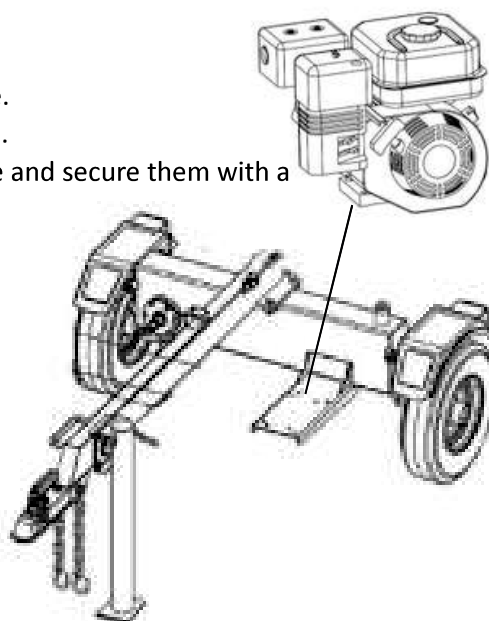
Safety:

- Never work on hoses under pressure.
- Check hoses regularly for wear
- Hydraulic oil under pressure can be dangerous.



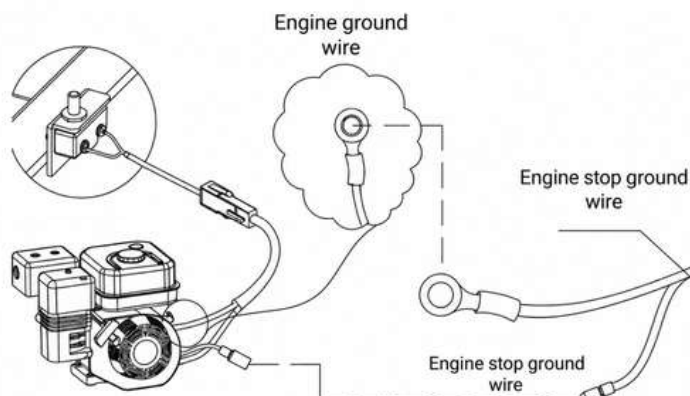
6.5 Gasoline engine assembly

1. Place the gasoline engine on the mounting plate on the frame.
2. Align the mounting holes of the motor with those of the plate.
3. Place the vibration dampers between the motor and the plate and secure them with a large flat washer $\varnothing 10$ and hexagon lock nut M10. (4x)



7. Electrical safety switch

Connect the wires from the motor and the electric break switch using a quick connector.



8. Top up engine oil

1. Ensure that the log splitter stands on a level surface.
2. Remove the oil filler cap/dipstick to add oil.
3. Consult the engine's separate owner's manual for the required amount of **SAE15W-40** engine oil; replace the oil filler cap/dipstick.
4. Check the engine oil level daily and top up if necessary.

⚠ NOTE: Check the engine oil level regularly during the break-in period.

CAUTION DO NOT attempt to crank or start the engine before it is properly filled with the recommended type and quantity of oil.

Your warranty will be voided in the event of damage to the log splitter resulting from failure to follow these instructions.

9. Adding gasoline to the engine

1. Use only clean, fresh, regular unleaded fuel with a minimum octane rating of 86.
2. DO NOT mix oil with fuel.
3. Remove the fuel cap and slowly add fuel to the tank. Do NOT overfill; leave approximately ¼ inch of space for fuel expansion.
4. Screw on the fuel cap and wipe away any spilled fuel.

⚠ Danger:

The exhaust fumes from the log splitter engine contain carbon monoxide, a colorless, odorless, poisonous gas. Inhaling carbon monoxide causes nausea, dizziness, fainting, or death. If you start to feel dizzy or weak, go into fresh air immediately.

Use the log splitter only outdoors in a well-ventilated area.

Do NOT use the log splitter in a building, enclosed space, or compartment. Do NOT allow exhaust fumes to enter an enclosed space through windows, doors, vents, or other openings.

DANGER CARBON MONOXIDE, if you use a log splitter indoors, YOU CAN BE DEAD IN MINUTES.

⚠ Warning

- Fuel and fuel vapors are highly flammable and extremely explosive.
- Fire or explosion can cause severe burns or death.
- Unintentional activation can lead to entanglement, traumatic amputation, or rupture.
- Use only regular unleaded petrol with a minimum octane rating of 86.
- Do NOT mix oil and gasoline.
- Fill the tank approximately 1/4" below the top of the tank to allow for fuel expansion.
- Do NOT fill the fuel tank indoors or when the engine is running or hot.
- Do NOT light cigarettes or smoke while filling the fuel tank.

10. Refill hydraulic oil

The log splitter must stand on a flat, horizontal surface before the hydraulic oil is added.

Remove the oil cap from the hydraulic reservoir.

Add 3 gallons of hydraulic oil. **OCH32V**, **OCH46V**, or universal hydraulic oil are all acceptable types of fluid. Automatic transmission fluid must be used at temperatures below 32 degrees. (All units have been tested and have excess oil in the ram.)

Check the hydraulic oil level.

Start the engine and use the control lever to pull the wedge in and out several times to remove air from the lines.

Check the hydraulic oil level again with the dipstick and top up if necessary.

Warning

- DO NOT remove the hydraulic oil filler cap when the engine is running or hot. Hot oil can escape and cause severe burns. Always allow the log splitter to cool down completely before removing the hydraulic oil cap.
- High fluid pressure and temperatures are generated in hydraulic log splitters. Hydraulic fluid escapes through a pinprick-sized hole and can pierce the skin and cause severe blood poisoning.
- Inspect the hydraulic system regularly for possible leaks. Never check for leaks by hand while the system is under pressure. Call for immediate medical attention if you are injured by escaping fluid.
- Ensure that all fittings are properly tightened before applying pressure. Relieve the system pressure before performing maintenance.
- Ensure that the hydraulic hoses do not touch hot surfaces or cutting areas.
- Hoses must be positioned so that they are clear of the motor and the cutting wedge. Always inspect the hoses before using the log splitter to prevent serious bodily injury.

11. Ministry

Warning

Read the instructions below and all safety information before operating or using the log splitter. Failure to follow these instructions may result in property damage or injury to the operator or bystanders.

Check before use

- Check the hydraulic oil level.
- Visually inspect hydraulic hoses and couplings for leaks or damage.
- Check if the engine oil level is correct.
- Check that both support legs are properly in the downward position.
- Make sure the tires are properly inflated.

Warning

- Use the log splitter exclusively for its intended purpose: splitting wood lengthwise, along the grain.
- Never make any changes or modifications to the machine (warranty will be void).
- Do not attach ropes, cables, or other devices to the control levers.
- Use the machine only in sufficient daylight.
- Never leave the log splitter unattended with the motor running.
- Do not change the gap position while the motor is running (risk of burns).
- Ensure that the bar is always locked.
- Do not drop the beam (danger of crushing and machine damage).
- Do not operate the machine under the influence of alcohol, drugs, or medication.
- Always wear safety equipment, eye protection, gloves, and safety shoes.
- Keep feet and body parts away from the wedge.
- Stop the motor immediately if the wood jams or does not split.
- Stay away from the lifting bracket during moving.
- Never transport passengers and never stand or sit on the log splitter.

11.1 Use of the wood splitter

Starting the log splitter

1. Open the fuel tap
2. Turn on the choke (if cold)
3. Pull the engine jumper cable
4. Let the engine warm up for a moment

Placing the wood

- Place the log on the beam (15)
- Use the wood support (14) to support the block
- Secure the wood with the wood clamp (13) so that it does not shift.

Splitting wood (important!)

1. Grasp both handles
2. Push them down at the same time
3. The wedge moves forward and splits the wood.
4. Release the levers → the wedge returns

Important:

- Always use both hands (safety!)
- Keep hands away from the wedge and the wood

Use of the lifting handle

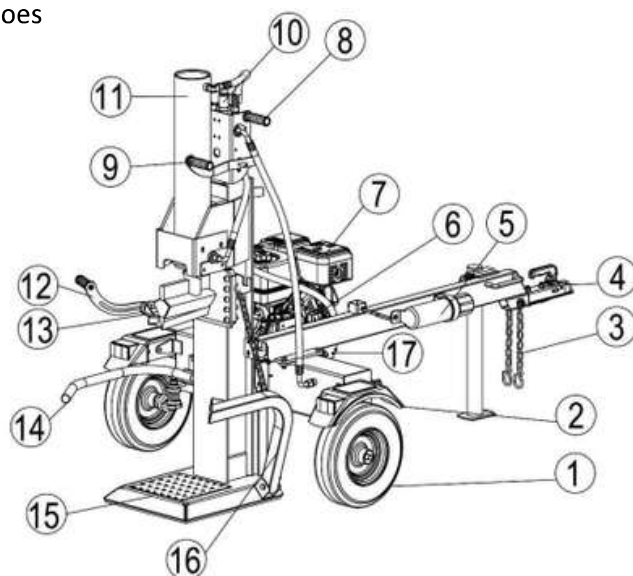
- With the lifting bracket (16) you can lift heavy blocks
- Operate this together with lever A (9)
- Use only when necessary

Tilting the beam

- Use the rotary handle (8) to adjust the beam:
 - Horizontal → for smaller blocks
 - Vertical → for heavy/stems

After use

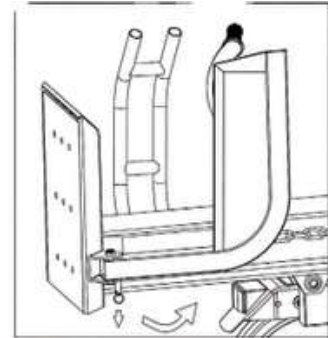
- Turn off the engine
- Release pressure from the hydraulic system
- Clean the machine
- Check for leaks or damage



12. Towing and transport

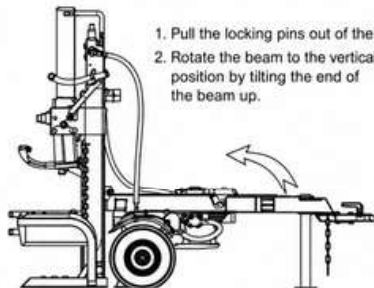
Remark:

- The log splitter is not permitted on public roads.
- Never exceed 60 km/h.
- Do not drive with worn or flat tires.
- Do not overinflate tires (risk of explosion). 2.0 - 2.5 bar.
- Check ball coupling, wheels, axle nuts, and locking pins before transport.
- Always use safety chains.
- Lock and secure the log splitter correctly to the vehicle.
- Take the extra length into account while driving.
- Turn off the vehicle before leaving it unattended.
- Block wheels to prevent unwanted movement.
- Retract the log holder and lifting bracket and secure with the spring pin during transport.



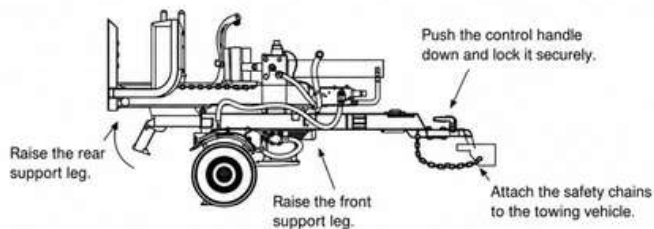
Note: Do not remove the electrical limit switch without authorization.

VERTICAL USE ONLY



1. Pull the locking pins out of the beam.
2. Rotate the beam to the vertical position by tilting the end of the beam up.

BEFORE TOWING



12.1 Storage

- Ensure the log splitter is clean and dry when stored.
- Lightly lubricate all surfaces and moving parts to prevent rust.
- Ensure that the log splitter is stored dry and protected during wet and cold weather.

13. Maintenance

Maintenance appointment	Element	Inspection / activities	Action in case of deviation
For every use	Engine oil	Check oil level	Refill SAE 15W/40
For every use	Hydraulic oil	Check level (cylinder retracted)	Refill
For every use	Hydraulic hoses	Check for cracks, wear, and leaks	Replace
For every use	Hydraulic fittings	Check for leaks / looseness	Secure / replace
For every use	Bolts & nuts	Check for looseness	Tighten
For every use	Tire pressure	Check correct voltage	Inflate (do not overpressurize)
After every use	Machine general	Remove dirt	Clean
After every use	Beam surface	Lightly grease	Lubricate
Periodically	Axle and wheel bearings	Lubricate	Lubricate
Annual	Moving parts	Clean and lubricate	Lubricate
Hydraulic maintenance	Hydraulic oil	Check level	Refill HV32, HV46
For transport	Ball coupling & chains	Check confirmation	Secure
For maintenance	Depressurize machine	Turn off the engine and move the lever.	Relieve pressure

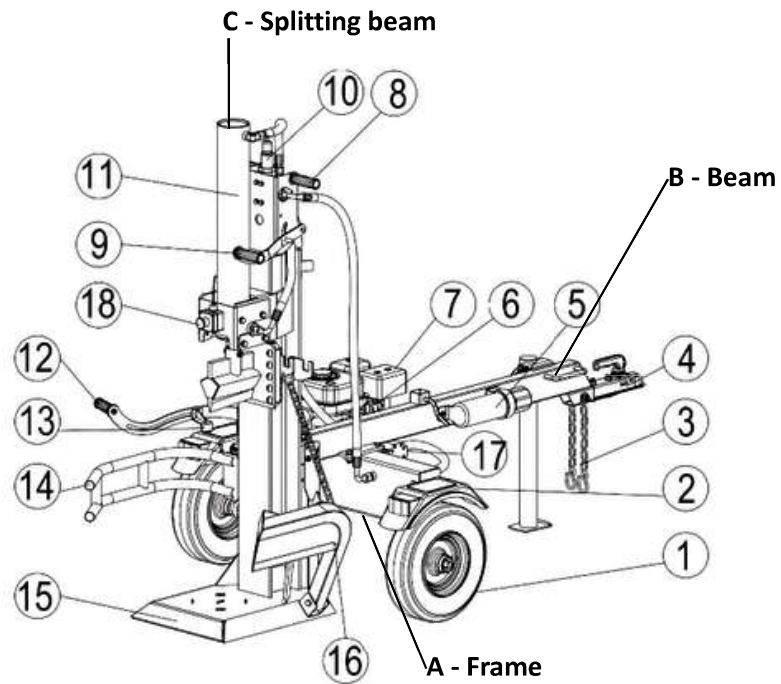
14. Problem & solution

Problem	Possible cause	Solution
Cylinder rod does not move	<ul style="list-style-type: none"> • Insufficient oil • Blocked hydraulic lines • Blocked control valve • Damaged control valve • Internal cylinder leakage 	<ul style="list-style-type: none"> • Check oil level • Flush and clean hydraulic system • Repair/replace control valve • Have cylinder repaired
Low cylinder rod speed	<ul style="list-style-type: none"> • Insufficient oil • Air in oil • Excessive pump inlet vacuum • Damaged control valve • Internal rule plaque • Internal cylinder damage • Return cylinder problem 	<ul style="list-style-type: none"> • Check oil level • Vent system • Check pump inlet • Repair control valve/cylinder
Wood does not split or splits very slowly	<ul style="list-style-type: none"> • Insufficient oil • Air in oil Pump problem • Location, regular door installation • Internal leakage • Cylinder damage 	<ul style="list-style-type: none"> • Check oil level • Vent system • Stel regelklep af met manometer • Repair if necessary
Motor seizes during splitting	<ul style="list-style-type: none"> • High control valve setting • Return cylinder problem 	<ul style="list-style-type: none"> • Adjust control valve correctly • Check return cylinder
Engine stalls at low load	<ul style="list-style-type: none"> • Blocked hydraulic lines • Blocked control valve • Return cylinder problem • Engine loaded at idle speed 	<ul style="list-style-type: none"> • Clean hydraulic system • Stel regelklep af • Use shorter wood length < 533 mm

15. Specifications

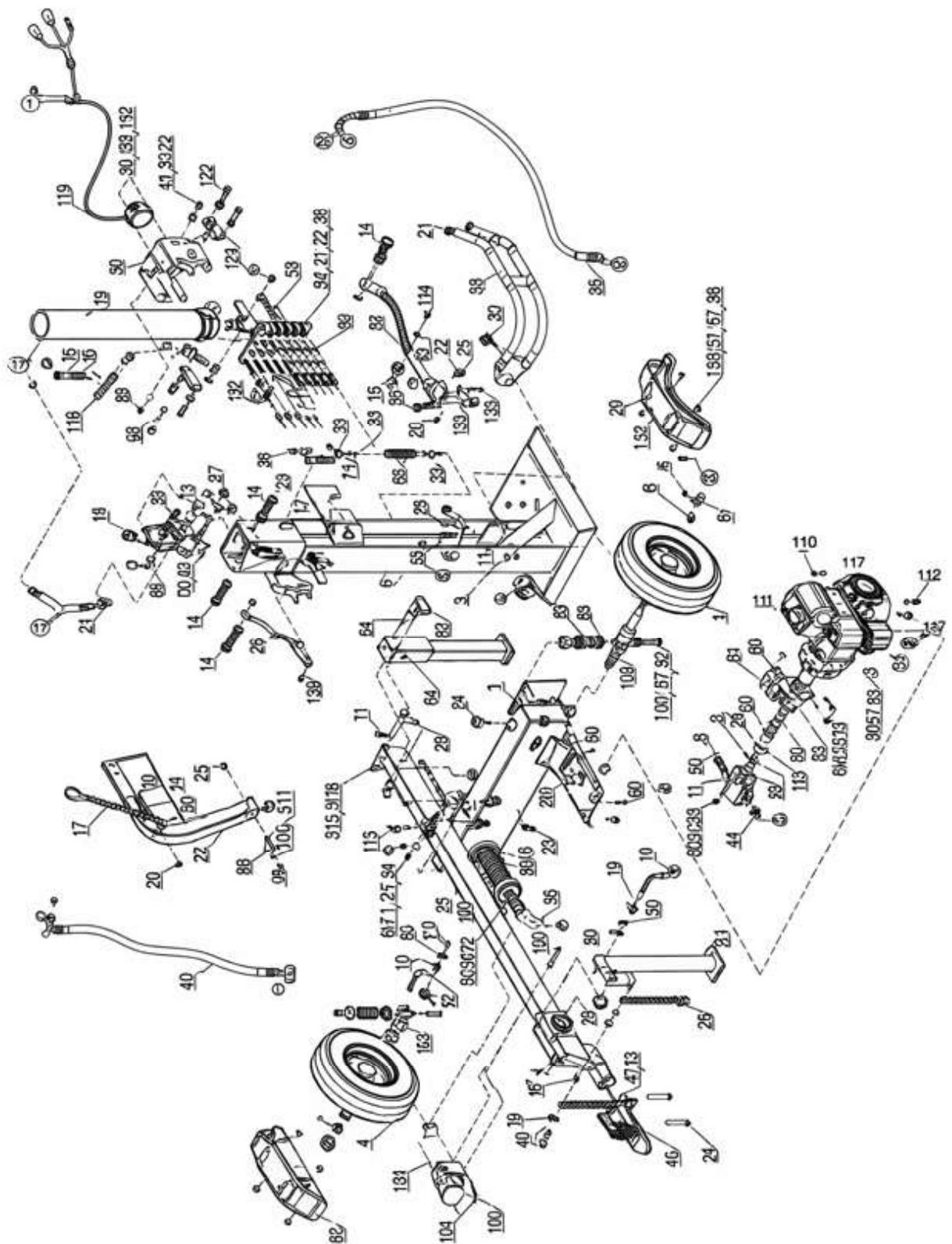
Element	Specification
Model	LS35BN
Brand	Woodcraft
Capacity	35 ton
Cycle time	13.5 seconds
hydraulic reservoir	25 liter
Maximum wood length	348 x 609 mm
Hydraulic cylinder	127 x 574,7 mm
Maximum pressure	254 bar
Gear pump	56.8 Liter/min , 2-traps
Maximum towing speed	60 km/h (on private property)
Wheel size	16"4.8 x 8
Tire pressure	60 PSI ~ 4.14 bar
Motor	306 cc

16. Assemblage



1. Band / wielmontage
2. Fenders
3. Safety chains
4. 50 mm coupling
5. Document holder
6. Switch
7. Motor
8. Turn the handle
9. Split operating lever A
10. Rule sheet
11. Cylinder
12. Split control lever B
13. Wooden grip bracket
14. Safety bar
15. Base plate
16. Hoist bracket - Hoist block.
17. Gear pump

17. Parts



17.1 Parts List

No.	Code	Description	Number
01	PLS35BN-01	hydraulic reservoir	1
02	PLS35BN-02	Towbar installation	1
03	PLS35BN-03	Beam	1
04	PLS35BN-04	Wheel mounting	2
05	PLS35BN-05	Split pin $\varnothing 4 \times 36$	2
06	PLS35BN-25	Plate ring $\varnothing 20$	2
07	PLS35BN-07	Ashcap	2
08	PLS35BN-08	Dunne Hex bolt M20x1.5	2
09	PLS35BN-09	Cylinder cover	1
10	PLS35BN-10	Wig	1
11	PLS35BN-11	Motor	1
12	PLS35BN-12	Polyurethane block	4
13	PLS35BN-13	O-ring $\varnothing 16 \times 2.5$	-
14	PLS35BN-14	Plastic handle	4
15	PLS35BN-15	Rulebook	1
16	PLS35BN-35	Pressure regulating valve	1
17	PLS35BN-17	Chain	1
18	PLS35BN-18	Safety pin	2
19	PLS35BN-19	Spring	2

No.	Code	Description	Number
20	PLS35BN-20	Plate ring Ø12	22
21	PLS35BN-21	Hex bolt M10x25	4
22	PLS35BN-22	Hex bolt M12x70	3
23	PLS35BN-23	Hex bolt M12	12
24	PLS35BN-24	Filter mounting plate	1
25	PLS35BN-25	Rubber ring	1
26	PLS35BN-26	Platte ring Ø6	6
27	PLS35BN-27	Retaining ring Ø6	6
28	PLS35BN-28	Hex bolt M6x20	6
29	PLS35BN-29	130° connecting connector	1
30	PLS35BN-30	o-ring Ø14x2.5	4
31	PLS35BN-31	o-ring Ø11x2.5	2
32	PLS35BN-32	Oil bolt	1
33	PLS35BN-33	Hex bolt M12x35	7
34	PLS35BN-34	Hex bolt M8x65	4
35	PLS35BN-35	Platte ring Ø8	16
36	PLS35BN-36	Hex bolt M8	14
37	PLS35BN-37	Hydraulic hose	1
38	PLS35BN-38	Extension plug	2
39	PLS35BN-39	Plastic plug	

No.	Code	Description	Number
40	PLS35BN-40	Hydraulic hose	1
41	PLS35BN-41	Transparent oil pipe	1
42	PLS35BN-42	Clamp	2
43	PLS35BN-43	Hex bolt M12x90	1
44	PLS35BN-44	Push button switch plate	1
45	PLS35BN-45	Thick ring	2
46	PLS35BN-46	Chain	2
47	PLS35BN-47	50 mm coupling	1
48	PLS35BN-48	Coupling pin	1
49	PLS35BN-49	Slotted screw M12x55	8
50	PLS35BN-50	Cylinder	1
51	PLS35BN-51	Log holder	1
52	PLS35BN-52	Split Joystick B	1
53	PLS35BN-53	Front support leg	1
54	PLS35BN-54	Secured for shaft $\varnothing 62$	1
55	PLS35BN-55	Lock ring $\varnothing 8$	20
56	PLS35BN-56	Large flat ring $\varnothing 10$	9
57	PLS35BN-57	Gear pump	1
58	PLS35BN-58	Hex bolt M8x30	4
59	PLS35BN-59	Steel wire locking for shaft	1

No.	Code	Description	Number
60	PLS35BN-60	M6x10 internal hexagon screw	1
61	PLS35BN-61	Gear pump clutch	1
62	PLS35BN-62	Motor bus	1
63	PLS35BN-63	Gear pump stand	1
64	PLS35BN-64	Hex bolt M8x25	4
65	PLS35BN-65	Clutch cover	1
66	PLS35BN-66	Hex bolt M8x25	4
67	PLS35BN-67	Filter	1
68	PLS35BN-68	R-pen	2
69	PLS35BN-69	Retaining ring Ø12	12
70	PLS35BN-70	Thick nut M12	10
71	PLS35BN-71	Lifting bracket	1
72	PLS35BN-72	Hex bolt M8x35	1
73	PLS35BN-73	Corner connector	1
74	PLS35BN-74	Nylon pad	1
75	PLS35BN-75	Connection pipe	1
76	PLS35BN-76	Split operating lever A	1
77	PLS35BN-7	Hex bolt M12	4
78	PLS35BN-78	Hex screw M8x16	4

No.	Code	Description	Number
79	PLS35BN-79	Hex bolt M8	1
80	PLS35BN-80	Hinge pin	1
81	PLS35BN-81	Split pin Ø2x10	-
82	PLS35BN-82	Rear support leg	1
83	PLS35BN-83	Spring saddle	4
84	PLS35BN-84	Hex bolt M16x110	2
85	PLS35BN-85	Compression spring	2
86	PLS35BN-86	Left fender	1
87	PLS35BN-87	Right fender	1
88	PLS35BN-88	Hex bolt M10x70	1
89	PLS35BN-89	Retaining ring Ø10	8
90	PLS35BN-90	Wigglijder	2
91	PLS35BN-91	Split pin Ø3x30	2
92	PLS35BN-92	Oil plug	1
93	PLS35BN-93	Compression spring	1
94	PLS35BN-94	Hexagon nut M4	2
95	PLS35BN-95	Pal (B)	2
96	PLS35BN-96	KEYCHAIN	2
97	PLS35BN-97	Veer B	2

No.	Code	Description	Number
98	PLS35BN-98	Jerrycan manual	1
99	PLS35BN-99	Borgmoer M6	3
100	PLS35BN-100	Castle mother M16	2
101	PLS35BN-101	Hex bolt M6x65	3
102	PLS35BN-102	Large flat ring Ø6	6
103	PLS35BN-103	Linker as	1
104	PLS35BN-104	Right axis	1
105	PLS35BN-105	Hex bolt M12x25	2
106	PLS35BN-106	Large flat ring Ø12	4
107	PLS35BN-107	Platte ring Ø16	2
108	PLS35BN-108	Hex bolt M12x75	1
109	PLS35BN-109	Platte ring Ø4	4
110	PLS35BN-110	Hex bolt M4x30	2
111	PLS35BN-111	Hex bolt M10	8
112	PLS35BN-112	Electric break switch	1
113	PLS35BN-113	Rubber ring 2	4
114	PLS35BN-114	High-pressure hose B	1
115	PLS35BN-115	High-pressure hose A	1
116	PLS35BN-116	Allen screw M6x16	2

No.	Code	Description	Number
117	PLS35BN-117	Hex bolt M10x35	1
118	PLS35BN-118	Cylinder end block	2
119	PLS35BN-119	Hex bolt M10x30	5
120	PLS35BN-120	Chain lift plate	1
121	PLS35BN-121	Slotted head screw M12x60	2
122	PLS35BN-122	Threaded rod	1
123	PLS35BN-123	Hex bolt M8x25	1
124	PLS35BN-124	Tension spring	1
125	PLS35BN-125	Swivel chair	1
126	PLS35BN-126	Hex bolt M8x25	-
127	PLS35BN-127	Handle spring	-
128	PLS35BN-128	Rotating seat	-
129	PLS35BN-129	Engine stop	-
130	PLS35BN-130	Cross recessed bolt M4x60	-
131	PLS35BN-131	Clamp	-
132	PLS35BN-132	Triple combination line	-

18. Warranty

Warranty Terms and Conditions

1. This warranty shall enter into force on the date stated on the original purchase invoice and shall remain valid for a period of twelve (12) months.
2. This warranty is non-transferable unless prior written consent has been obtained from the supplier.
3. Warranty claims will not be accepted without presentation of the original purchase invoice.
4. This warranty shall apply exclusively provided that the product has been used in full compliance with the instructions contained in the user manual and solely for its intended purpose.
5. No alterations, modifications, or technical changes may be made to the product.
6. This warranty shall be void in the event of improper, negligent, or incorrect use of the product.
7. Transportation, shipping, and related costs are expressly excluded from this warranty.
8. Any repair work must be carried out exclusively by the supplier or an authorised service partner. Repairs performed by unauthorised third parties shall immediately void all warranty rights.
9. Repairs performed during the warranty period shall not result in an extension of the original warranty period. However, a separate warranty period of three (3) months shall apply to the repaired components, provided that the original warranty period has expired.
10. All maintenance and servicing operations described in the user manual must be performed in a timely and proper manner. Failure to do so may result in the warranty becoming void.
11. Warranty claims may only be submitted to the original point of sale at which the product was purchased.

19. Declaration of conformity

EG-verklaring van overeenstemming - Declaration of conformity – Konformitätsverklärung - Declaration de conformite - Dichiarazione di conformita- Declaracion de conformidad

Wij, Valkenpower BV, Haverkamp 11, 6051 AC Maasbracht, Nederland, verklaren geheel onder eigen verantwoordelijkheid dat de producten

We, Valkenpower BV, Haverkamp 11, 6051 AC Maasbracht, Nederland, declare under our dole responsibility that the receiver

Wir, Valkenpower BV, Haverkamp 11, 6051 AC Maasbracht, Nederland, erklären in alleiniger Verantwortung, daß der Behälter

Nous, Valkenpower BV, Haverkamp 11, 6051 AC Maasbracht, Nederland, déclarons sous notre seule responsabilité que le reservoir

Noi, Valkenpower BV, Haverkamp 11, 6051 AC Maasbracht, Nederland, dichiariamo sotto la nostra responsabilità che

La empresa, Valkenpower BV, Haverkamp 11, 6051 AC Maasbracht, Nederland, declara, bajo su responsabilidad, que

Type Model Art Tipe	Beschrijving Description Beschreibung Description	Merk Brand Marke Marque
LS35BN	Houtklover	Woodcraft
LS35BN	Log Splitter	Woodcraft
LS35BN	Holzspalter	Woodcraft
LS35BN	Fendeuse de bûches	Woodcraft

Waarop deze verklaring betrekking heeft, in overeenstemming zijn met de volgende normen:

To which this declaration relates is in conformity with the following document:

Auf dem sich diese Erklärung bezieht, mit dem folgendem Dokument übereinstimmt:

Auquel se réfère cette déclaration est conforme à le document suivant:

Standaard, Standard:

NEN ISO 12100:2010, NEN 609-1:2017, NEN ISO 13854:2019, NEN ISO 14120:2015, NEN ISO 13857:2019

De machinerichtlijn, Following the provisions of Directive, Gemäß den Bestimmungen der Richtlinie,
Conformément aux dispositions de la Directive: **2006/42/EG**

Serienummer:
Serial number:

Directeur Valkenpower

Nederland, Maasbracht, 27-10-2022

B.A.H Valkenburg